

# PRODUCT GUIDE



DESIGNED IN USA  
DRIVEN WORLDWIDE



**ARROYO**  
TIRES

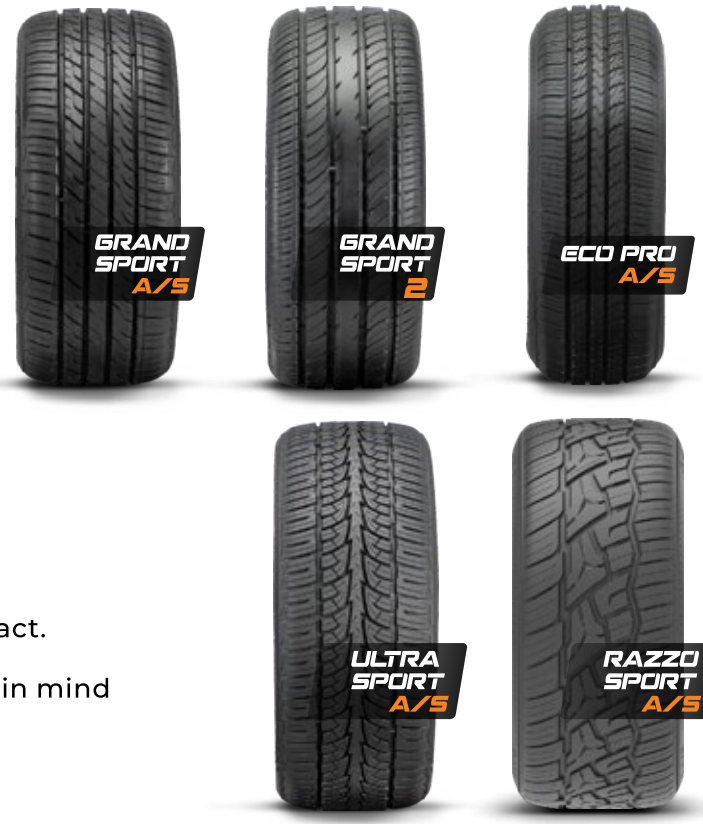


Arroyo Tire is an innovative brand made with the highest technology to bring you the best quality at the most affordable price.

These tires offer superior performance, precision, handling, braking grip, comfort and durability, along with low noise level.

Arroyo tire is dedicated to delivering improved savings and operational efficiencies, while reducing environmental impact.

These tires are built with your needs and safety in mind and ready to adapt when those needs change.



## AR SERIES COMMERCIAL TBR

## CONTENTS

### Passenger Tires



Arroyo Grand Sport A/S	page 4
Arroyo Grand Sport 2	page 10
Arroyo Eco Pro A/S	page 14
<b>NEW</b> Arroyo Run Flat	page 16
Arroyo Ultra Sport A/S	page 26
<b>NEW</b> Arroyo Razzo Sport A/S	page 30

### Light Truck Tires

Arroyo Eco Pro H/T	page 18
Arroyo Eco Pro H/T 2	page 22
Arroyo Van Pro 2	page 34
Arroyo Van Pro 3 / Van Pro	page 36-37
Arroyo Tamarock A/T	page 41
Arroyo Tamarock M/T	page 46
<b>NEW</b> Arroyo Tamarock R/T	page 50

### **NEW** Arroyo ST SEMI-STEEL / FULL-STEEL — page 56 - 57

### **NEW** Commercial (TBR) Tires

- 
**• STEER/ALL-POSITION - SMART WAY**  
 Arroyo AR 1000 - AR 1100 \_\_\_\_\_ page 60
- 
**• REGIONAL CLOSED-SHOULDER DRIVE - SMART WAY**  
 Arroyo AR 2000 - AR 2200 \_\_\_\_\_ page 62
- REGIONAL OPEN-SHOULDER DRIVE**  
 Arroyo AR 3000 \_\_\_\_\_ page 64
- TRAILER**  
 Arroyo AR 4000 \_\_\_\_\_ page 66
- ON-OFF ROAD / MIXED-SERVICE**  
 Arroyo AR 5000 \_\_\_\_\_ page 68
- REGIONAL PICK-UP/DELIVERY**  
 Arroyo AR 6000 \_\_\_\_\_ page 70

### LIMITED TIRE WARRANTY PLAN

Arroyo Tire Limited Warranty Plan	page 72
-----------------------------------	---------



**UHP All-Season  
Ultra High Performance**

**GRAND SPORT A/S**



- Sizes - 14, 15, 16, 17, 18, 19, 20 & 22" Rim Diameter 25, 30, 35, 40, 45, 50, 55 & 60 Series Aspect Ratio
- 500 U.T.Q.G.
- 10/32 Tread Depth

- Jointless Nylon Band Spiral wound for uniformity Increases strength in the high stress shoulder area.

- 2 Wide Steel Belts Strengthen the overall tread area. Provides stability, excellent wear character & long mileage.



**GRAND SPORT A/S**

Wheel Dia.	TIRE SIZE	LI / SR	PLY	AMERICAN STANDARD FOR THE RIM	REC RIM (MEASURING RIM) WIDTH (in.)	MAX LOAD (lbs)	MAX PSI	UTQG
14"	185/60R14	82H	-	5.0-5.5-6.5	5 1/2J	1047	44	500 A A
15"	185/55R15	82V	-	5.0-6.0-6.5	6J	1047	44	500 A A
	195/50R15	82V	-	5.5-6.0-7.0	6J	1047	44	500 A A
	195/55R15	85V	-	5.5-6.0-7.0	6J	1135	44	500 A A
16"	185/55R16	87V	-	5.0-6.0-6.5	6J	1201	49	500 A A
	NEW 195/50ZR16	84W	-	5.5-6-6.5	6	1102	44	500 A A
	195/55ZR16	91W	-	5.5-6.0-7.0	6J	1356	49	500 A A
	205/45ZR16	87W	-	6.5-7.0-7.5	7J	1201	49	500 A A
	205/50ZR16	87W	-	5.5-6.5-7.5	6 1/2J	1201	44	500 A A
	205/55ZR16	94W	-	5.5-6.5-7.5	6 1/2J	1477	49	500 A A
17"	215/55ZR16	97W	-	6.0-7.0-7.5	7 J	1609	49	500 A A
	225/55ZR16	95W	-	6.0-7.0-8.0	7J	1521	44	500 A A
	205/40ZR17	84W	-	-	7 1/2J	1102	49	500 A A
	205/45ZR17	88W	-	-	7J	1235	49	500 A A
	205/50ZR17	93W	-	5.5-6.5-7.5	6 1/2J	1433	49	500 A A
	205/55R17	95V	-	-	6 1/2J	1521	49	500 A A
	215/45ZR17	91W	-	7.0-8.0	7J	1356	49	500 A A
	215/50ZR17	95W	-	6.0-7.0-7.5	7J	1521	49	500 A A
	215/55ZR17	98W	-	6.0-7.0-7.5	7J	1653	49	500 A A
	225/45ZR17	94Y	-	7.0-7.5-8.5	7 1/2J	1477	49	500 A A
	225/50ZR17	98W	-	6.0-7.0-8.0	7J	1653	49	500 A A
	225/55ZR17	101W	-	6.0-7.0-8.0	7J	1819	49	500 A A
	235/45ZR17	97W	-	7.5-8.0-9.0	8J	1609	49	500 A A
	235/50ZR17	100W	-	6.5-7.5-8.5	7 1/2J	1764	49	500 A A
235/55ZR17	103W	-	6.5-7.5-8.5	7 1/2J	1929	49	500 A A	
235/60R17	102H	-	6.5-7.0-8.5	7J	1874	44	500 A A	
245/40ZR17	95W	-	8.0-8.5-9.5	8 1/2J	1521	49	500 A A	
245/45ZR17	99W	-	7.5-8.0-9.0	8J	1709	49	500 A A	
18"	NEW 215/35ZR18	84W XL	-	7-7.5-8	7 1/2	1102	49	500 A A
	215/40ZR18	89W	-	7.0-7.5-8.5	7 1/2 J	1279	49	500 A A
	215/45ZR18	89W	-	7.0-8.0	7J	1279	44	500 A A
	215/55R18	95V	-	6.0-7.0-7.5	7J	1521	44	500 A A
	225/40ZR18	92W	-	7.5-8.0-9.0	8J	1389	49	500 A A
	225/45ZR18	95W	-	7.0-7.5-8.5	7 1/2J	1521	49	500 A A
	225/50ZR18	99W	-	6.0-7.0-8.0	7J	1709	49	500 A A
	225/55R18	102V	-	6.0-7.0-8.0	7J	2271	49	500 A A
	235/40ZR18	95W	-	8.0-8.5-9.5	8 1/2J	1521	49	500 A A
235/45ZR18	98W	-	7.5-8.0-9.0	8J	1653	49	500 A A	

GRAND SPORT A/S

**UHP All-Season  
Ultra High Performance**

**GRAND SPORT A/S**



**PATTERN INTRODUCTIONS**

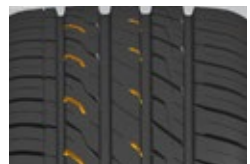
OUTSIDE      INSIDE



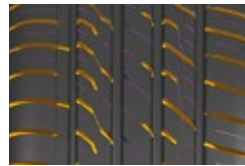
1. 4 wide longitudinal grooves provide good water evacuation for excellent handling performance on wet roads.



2. Outside Anti Eccentric wear block design Anti eccentric wear blocks on outer shoulder can increase the tread contact area at braking to obtain uniform contact pressure, which can avoid eccentric wear.



3. Partial Slanted Grooves interrupt air flow across the tread to decrease noise. Partial slanted grooves also can provide stability during cornering



4. Wide Grooves and fine sipes cut through water film to provide wet traction, and greatly reduce noise, providing a comfortable driving experience.



5. Silent pitch variation and sequence design Optimization of pitch width and sequence effectively reduce the noise resonance, resulting in a quieter ride.

**GRAND SPORT A/S**

Wheel Dia.	TIRE SIZE	LI / SR	PLY	AMERICAN STANDARD FOR THE RIM	REC RIM (MEASURING RIM) WIDTH (in.)	MAX LOAD (lbs)	MAX PSI	UTQG
18"	235/50ZR18	101W	-	6.5-7.5-8.5	7 1/2J	1819	49	500 A A
	245/40ZR18	97W	-	8.0-8.5-9.5	8 1/2J	1609	49	500 A A
	245/45ZR18	100Y	-	7.5-8.0-9.0	8J	1764	49	500 A A
	245/50ZR18	100W	-	7.0-7.5-8.5	7 1/2J	1764	44	500 A A
	245/55ZR18	103W	-	7.0-7.5-8.5	7 1/2J	1929	44	500 A A
	255/35ZR18	94W	-	8.5-9.0-10.0	9 J	1477	49	500 A A
	255/40ZR18	99W	-	8.5-9.0-10.0	9J	1709	49	500 A A
	255/55ZR18	109W	-	7.0-8.0-9.0	8J	2271	49	500 A A
	NEW 255/60R18	112V XL	-	7-7.5-8	7 1/2	2469	49	500 A A
	NEW 265/35ZR18	97W	-	9.0-9.5-10.5	9 1/2 J	1609	49	500 A A
NEW 275/40ZR18	99Y	-	9-9.5-10	9 1/2	1709	44	500 A A	
19"	225/40ZR19	93W	-	-	8J	1433	49	500 A A
	225/45ZR19	96W	-	7.0-7.5-8.5	7 1/2 J	1565	49	500 A A
	225/55R19	103V XL	-	6.0-7.0-8.0	7J	1929	50	500 A A
	235/35ZR19	91W	-	-	8 1/2J	1356	49	500 A A
	235/40ZR19	96W	-	8.0-8.5-9.5	8 1/2J	1565	49	500 A A
	235/45ZR19	99W	-	7.5-8.0-9.0	8J	1709	49	500 A A
	235/50ZR19	103W	-	6.5-7.5-8.5	7 1/2J	1929	49	500 A A
	235/55R19	105V	-	6.5-7.5-8.5	7 1/2J	2039	49	500 A A
	NEW 235/65R19	109V XL	-	6.5-7-7.5	7	2271	49	500 A A
	245/35ZR19	97W	-	8.0-8.5-9.5	8 1/2J	1609	49	500 A A
	245/40ZR19	98Y	-	8.0-8.5-9.5	8 1/2J	1653	49	500 A A
	245/45ZR19	102W	-	7.5-8.0-9.0	8 J	1874	49	500 A A
	245/50ZR19	105W XL	-	7.0-7.5-8.5	7 1/2J	2039	50	500 A A
	245/55ZR19	103W	-	7.0-7.5-8.5	7 1/2J	1929	44	500 A A
	255/35ZR19	96W	-	-	9J	1565	49	500 A A
	255/40ZR19	100W	-	8.5-9.0-10.0	9J	1764	49	500 A A
	255/45ZR19	104W	-	8.0-8.5-9.5	8 1/2J	1984	49	500 A A
	255/55ZR19	111W	-	-	8J	2403	49	500 A A
265/30ZR19	93W	-	-	9 1/2J	1433	49	500 A A	
265/35ZR19	98Y XL	-	-	9 1/2J	1653	50	500 A A	
265/50ZR19	110W XL	-	-	8 1/2J	2337	49	500 A A	
275/30ZR19	96W	-	9.0-9.5-10.0	9 1/2J	1565	49	500 A A	
275/35ZR19	100W	-	-	9 1/2J	1764	49	500 A A	
275/40ZR19	101Y	-	9.0-9.5-11.0	9 1/2J	1819	44	500 A A	
NEW 275/45ZR19	108W XL	-	8.5-9-9.5	9	2205	49	500 A A	
275/55R19	111V	-	-	8 1/2J	2403	44	500 A A	
20"	225/35ZR20	93W	-	7.5-8.0-9.0	8J	1433	49	500 A A

GRAND SPORT A/S



GRAND SPORT A/S

Wheel Dia.	TIRE SIZE	LI / SR	PLY	AMERICAN STANDARD FOR THE RIM	REC RIM (MEASURING RIM) WIDTH (in.)	MAX LOAD (lbs)	MAX PSI	UTQG
20"	235/35ZR20	92Y XL	-	-	8 1/2J	1389	50	500 A A
	235/45ZR20	100W XL	-	7.5-8.0-9.0	8J	1764	50	500 A A
	235/50ZR20	104W XL	-	-	7 1/2J	1984	50	500 A A
	235/55ZR20	102W	-	6.5-7.5-8.5	7 1/2J	1874	44	500 A A
	245/35ZR20	95W	-	-	8 1/2J	1521	49	500 A A
	245/40ZR20	99Y	-	8.0-8.5-9.5	8 1/2J	1709	49	500 A A
	245/45ZR20	103W	-	7.5-8.0-9.0	8J	1929	49	500 A A
	255/35ZR20	97W	-	8.5-9.0-10.0	9 J	1609	49	500 A A
	NEW 255/40ZR20	101W XL	-	8.5-9-9.5	9	1819	49	500 A A
	255/45ZR20	105W	-	8.0-8.5-9.5	8 1/2J	2039	49	500 A A
	255/50R20	109V	-	7.0-8.0-9.0	8 J	2271	49	500 A A
	255/55R20	110H	-	7.0-8.0-9.0	8J	2337	49	500 A A
	NEW 265/35ZR20	99Y XL	-	9-9.5-10	9 1/2	1709	49	500 A A
	265/45ZR20	108W	-	-	9 J	2205	49	500 A A
	265/50R20	111V	-	7.5-8.5-9.5	8 1/2J	2403	49	500 A A
	275/30ZR20	97W	-	9.0-9.5-10.0	9 1/2J	1609	49	500 A A
	275/35ZR20	102W	-	9.0-9.5-11.0	9 1/2J	1874	49	500 A A
	275/40ZR20	106W	-	9.0-9.5-11.0	9 1/2 J	2094	49	500 A A
	275/50ZR20	113Y XL	-	-	8 1/2J	2535	50	500 A A
	285/30ZR20	99Y XL	-	9.5-10.0-10.5	10J	1709	50	500AA
285/35ZR20	104W XL	-	9.5-10.0-11.0	10J	1984	49	500 A A	
295/40ZR20	110W XL	-	10.0-10.5-11.5	10 1/2J	2337	49	500 A A	
NEW 295/45ZR20	114Y XL	-	9.5-10-10.5	10	2601	49	500 A A	
305/30ZR20	103W XL	-	7.0-8.5-9.0	11 J	1929	49	500 A A	
NEW 305/35ZR20	107Y XL	-	10.5-11-11.5	11	2149	49	500 A A	
315/35ZR20	110W	-	10.5-11.0-12.5	11 J	2337	49	500 A A	
21"	NEW 245/35ZR21	96Y XL	-	-	8 1/2J	1565	50	500 A A
	255/35ZR21	98Y XL	-	8.5-9-9.5	9	1653	49	500 A A
	NEW 255/40ZR21	105Y XL	-	8.5-9-9.5	9	2039	49	500 A A
	265/35ZR21	101Y XL	-	-	9 1/2J	1819	50	500 A A
	265/40ZR21	105Y XL	-	-	9 1/2J	2039	50	500 A A
	NEW 265/45ZR21	108Y XL	-	8.5-9-9.5	9	2205	49	500 A A
	275/35ZR21	103Y XL	-	-	9 1/2J	1929	50	500 A A
	275/40ZR21	109Y XL	-	-	9 1/2J	2271	50	500 A A
	275/45ZR21	110Y XL	-	-	9J	2337	50	500 A A
	NEW 275/50ZR21	113Y XL	-	8-8.5-9	8 1/2	2335	49	500 A A
	NEW 285/30ZR21	100Y XL	-	9.5-10-10.5	10	1764	49	500 A A
	285/35ZR21	108Y XL	-	-	10J	2205	50	500 A A
285/40ZR21	109Y XL	-	-	10J	2271	50	500 A A	
285/45ZR21	113W XL	-	-	9 1/2J	2535	50	500 A A	

GRAND SPORT A/S

Wheel Dia.	TIRE SIZE	LI / SR	PLY	AMERICAN STANDARD FOR THE RIM	REC RIM (MEASURING RIM) WIDTH (in.)	MAX LOAD (lbs)	MAX PSI	UTQG
21"	295/35ZR21	107Y XL	-	-	10 1/2J	2149	50	500 A A
	295/40ZR21	111Y XL	-	-	10 1/2J	2403	50	500 A A
	315/30ZR21	105Y XL	-	-	11J	2039	50	500 A A
	315/35ZR21	111Y XL	-	-	11J	2403	50	500 A A
	315/40ZR21	111Y	-	-	11J	2403	44	500 A A
	325/30ZR21	110Y XL	-	-	11 1/2J	2337	50	500 A A
	NEW 225/30RZ22	89W XL	-	7.5-8-8.5	8	1201	49	500 A A
255/30ZR22	95W	-	-	9 J	1521	49	500 A A	
NEW 265/30ZR22	97W XL	-	9-9.5-10	9 1/2	1609	49	500 A A	
265/35ZR22	102W XL	-	-	9 1/2J	1874	49	500 A A	
275/35ZR22	107Y XL	-	-	9 1/2J	2149	50	500 A A	
275/40ZR22	108Y XL	-	-	9 1/2J	2205	50	500 A A	
275/50R22	115H XL	-	7.5-8.5-9.5	8 1/2J	2679	50	500 A A	
22"	285/35ZR22	106W	-	-	10J	2094	49	500 A A
	285/40ZR22	110Y XL	-	-	10J	2337	50	500 A A
	NEW 295/25ZR22	97Y XL	-	10-10.5-11	10 1/2	1609	49	500 A A
	295/30ZR22	110Y XL	-	-	10 1/2J	2337	50	500 A A
	NEW 305/25ZR22	103Y XL	-	10.5-11-11.5	11	1709	49	500 A A
	NEW 305/45R22	118V XL	-	9.5-10-10.5	10	2910	49	500 A A
	NEW 315/25ZR22	101Y XL	-	11-11.5-12	11 1/2	1819	49	500AA
	315/30ZR22	107Y XL	-	-	11J	2149	50	500 A A
	315/35ZR22	111Y XL	-	-	11J	2403	50	500 A A
	NEW 325/40ZR22	114W	-	11-11.5-12	11 1/2	2601	44	500 A A
23"	285/35ZR23	107Y	-	COMING SOON				
	285/40ZR23	107Y	-	COMING SOON				
	325/30ZR23	109Y	-	COMING SOON				
	325/35ZR23	111Y	-	COMING SOON				
24"	NEW 245/30ZR24	94W XL	-	8-8.5-9	8 1/2	1477	49	500 A A
	NEW 255/25ZR24	95W XL	-	8.5-9-9.5	9	1521	49	500 A A
	NEW 255/30ZR24	97W XL	-	8.5-9-9.5	9	1609	49	500 A A
	NEW 275/25ZR24	96W XL	-	9.5-10-10.5	10	1565	49	500 A A
	NEW 285/30ZR24	103W XL	-	9.5-10-10.5	10	1929	49	500 A A
	NEW 285/35ZR24	108W XL	-	9.5-10-10.5	10	2205	49	500 A A
	NEW 285/40R24	112V XL	-	9.5-10-10.5	10	2469	49	500 A A
25"	NEW 295/30ZR24	104Y XL	-	10-10.5-11	10 1/2	1984	49	500 A A
	NEW 295/35R24	110V XL	-	10-10.5-11	10 1/2	2337	49	500 A A
	NEW 305/30ZR24	107W XL	-	10.5-11-11.5	11	2149	49	500 A A
	NEW 275/25ZR26	98W XL	-	9.5-10-10.5	10	1653	49	500 A A
NEW 295/25ZR26	102W XL	-	10-10.5-11	10 1/2	1874	49	500 A A	

Tire sizes, technical data and product availability are subject to change. Please see arroyotires.com for the most up-to-date information.

# UHP All-Season Ultra High Performance **GRAND SPORT 2**



- Sizes – 13, 14,15,16, 17,18,19 & 20”  
Rim Diameter 40,45,50,55,60,  
65 & 70 Series Aspect Ratio
- 400 AA U.T.Q.G.
- 10/32 Tread Depth

- Features  
Independent Tread Block  
Pattern Spiral wound Joint  
less Nylon Band  
2 Wide Steel Belts

- Functions  
Rapidly Removes Road Surface  
Water. Increases strength in  
high stress shoulder area  
Reinforces the entire tread area

- Benefits  
Increases contact to the road  
for more traction.  
Improves uniformity and ride  
comfort.  
Provides stability, excellent  
wear character & long mileage



## GRAND SPORT 2

Wheel Dia.	TIRE SIZE	SERVICE DESC./PLY RATING	OVERALL DIAMETER (in.)	SECTION WIDTH (in.)	APPROVED RIM (MEASURING RIM) WIDTH (in.)	TREAD DEPTH (in/32)	MAX LOAD (lbs)	MAX PSI	UTQG
12"	175/70R12	80T	-	-	-	-	-	-	-
	165/65R13	77H	21.34	6.81	5	10	908	44	400AA
	165/70R13	79T	21.89	6.61	5	10	963	44	400AA
13"	165/80R13	83T	-	-	-	-	-	-	-
	175/60R13	77H	-	-	-	-	-	-	-
	175/70R13	82H	22.60	6.93	5	10	1047	44	400AA
	185/60R13	80H	-	-	-	-	-	-	-
	185/70R13	86H	-	-	-	-	-	-	-
	165/60R14	75H	-	-	-	-	-	-	-
14"	165/70R14	-	-	-	-	-	-	-	-
	175/65R14	82H	22.99	7.56	5	10	1047	44	400AA
	175/65R14	86H XL	22.99	7.56	6.5	10	1168	50	400AA
	175/70R14	84H	23.70	7.64	5	10	1102	44	400AA
	175/70R14	88H XL	23.70	7.64	6.2	10	1235	50	400AA
	185/55R14	80V	21.73	7.64	6.7	10	992	44	400AA
	185/60R14	82V	22.76	7.68	5.5	10	1047	44	400AA
	185/65R14	86H	23.39	7.64	5.5	10	1168	44	400AA
	185/70R14	88H	23.94	7.39	5.5	10	1235	44	400AA
	195/45R14	77V	21.71	-	7	10	908	44	400AA
	195/70R14	91H	24.88	7.99	6.5	10	1356	44	400AA
	205/60R14	88H	-	-	-	-	-	-	-
15"	175/65R15	84H	24.82	-	6	10	1102	44	400AA
	185/55R15	82H	22.76	7.48	6.3	10	1047	44	400AA
	185/60R15	84V	23.39	7.47	5.5	10	1102	44	400AA
	185/60R15	88V XL	23.39	7.47	6.2	10	1235	50	400AA
	185/65R15	88H	24.46	7.99	5.5	10	1235	44	400AA
	185/65R15	92H XL	24.46	7.99	6.9	10	1389	50	400AA
	195/45R15	78V	22.01	7.87	6.5	10	937	44	400AA
	195/50R15	82V	22.91	8.07	6	10	1047	44	400AA
	195/55R15	89V XL	23.35	7.95	6	10	1279	50	400AA
	195/60R15	88V	24.21	8.23	6	10	1235	44	400AA
	195/65R15	95V XL	24.88	7.88	6	10	1521	50	400AA
	195/65R15	91V	24.77	7.88	6.2	10	1356	44	400AA
	205/60R15	95H XL	24.69	8.58	6	10	1521	50	400AA
	205/65R15	94V	25.59	8.66	6	10	1477	44	400AA



GRAND SPORT 2

Wheel Dia.	TIRE SIZE	SERVICE DESC./PLY RATING	OVERALL DIAMETER (in.)	SECTION WIDTH (in.)	APPROVED RIM (MEASURING RIM) WIDTH (in.)	TREAD DEPTH (in/32)	MAX LOAD (lbs)	MAX PSI	UTQG
15"	205/65R15	99H XL	25.59	8.66	7	10	1709	50	400AA
	215/70R15	98H	27.01	8.98	7.5	10	1653	44	400AA
16"	185/60R16	86V	24.88	7.60	6.2	10	1168	44	400AA
	195/40R16	80V XL	22.01	7.87	7	10	992	50	400AA
	195/45ZR16	84W XL	22.91	7.87	6.5	10	1102	50	400AA
	195/55R16	87V	24.21	8.07	6	10	1202	44	400AA
	195/60R16	99V XL	25.16	7.88	6	10	1709	50	400AA
	205/40ZR16	83W XL	22.36	8.35	7.5	10	1074	50	400AA
	205/45ZR16	87W XL	23.15	8.35	7	10	1202	50	400AA
	205/55ZR16	94W XL	24.69	8.66	6.5	10	1477	50	400AA
	205/60R16	92V	25.59	8.66	6	10	1389	44	400AA
	205/65R16	95H	26.46	8.66	6	10	1521	44	400AA
	215/55ZR16	93W	25.04	9.25	7	10	1433	44	400AA
	215/55ZR16	97W XL	25.04	9.25	7.8	10	1609	50	400AA
	215/60R16	95H	26.30	8.94	6.5	10	1521	44	400AA
	215/60R16	99H XL	26.30	8.94	7.5	10	1709	50	400AA
	215/65R16	98H	27.01	8.98	6.5	10	1653	44	400AA
	225/55ZR16	95W	25.67	9.76	7	10	1521	44	400AA
	225/55ZR16	99W XL	25.67	9.76	7.5	10	1709	50	400AA
	225/60R16	98V	26.69	9.37	6.5	10	1653	44	400AA
	225/60R16	102V XL	26.69	9.37	6.5	10	1653	44	400AA
	225/60ZR16	102W XL	26.69	9.25	7.5	10	1874	50	400AA
225/65R16	100H	27.56	9.29	7.5	10	1984	44	400AA	
225/65R16	104H XL	27.56	9.29	7.5	10	1984	50	400AA	
17"	195/40R17	81V XL	22.91	7.87	7.5	10	1019	50	400AA
	205/40ZR17	84W XL	24.00	-	8	10	1102	46	400AA
	205/45ZR17	88W XL	24.17	8.35	7	10	1235	50	400AA
	205/50ZR17	93W XL	24.69	8.58	7	10	1433	50	400AA
	215/45R17	91V XL	24.65	8.82	7	10	1356	50	400AA
	215/45ZR17	91W XL	24.65	8.82	8	10	1356	50	400AA
	215/50ZR17	95W XL	25.04	9.29	7	10	1521	50	400AA
	215/55ZR17	94W	26.30	9.02	7	10	1477	44	400AA
	215/55ZR17	98W XL	26.30	9.02	7.7	10	1653	50	400AA
	225/45ZR17	94W XL	24.88	9.25	7.5	10	1477	50	400AA
	225/50ZR17	94W	25.67	9.37	8	10	1477	50	400AA

GRAND SPORT 2

Wheel Dia.	TIRE SIZE	SERVICE DESC./PLY RATING	OVERALL DIAMETER (in.)	SECTION WIDTH (in.)	APPROVED RIM (MEASURING RIM) WIDTH (in.)	TREAD DEPTH (in/32)	MAX LOAD (lbs)	MAX PSI	UTQG
17"	225/50ZR17	98W XL	25.67	9.37	7	10	1653	50	400AA
	225/55ZR17	97W	26.69	9.37	8	10	1521	44	400AA
	225/55ZR17	101W XL	26.69	9.37	7	10	1819	50	400AA
	225/60R17	99H	27.56	9.29	7.5	10	1709	44	400AA
	225/60R17	104H XL	27.56	9.29	7.5	10	1984	50	400AA
	225/65R17	102H	28.62	9.29	7.5	10	1874	44	400AA
	225/65R17	106H XL	28.62	9.29	7.5	10	2094	50	400AA
	235/45ZR17	97W XL	25.24	9.76	8	10	1609	50	400AA
	235/55R17	99V	27.17	10.04	5.5	10	1709	44	400AA
	235/60R17	106H XL	28.15	10.12	8.5	10	2094	50	400AA
	245/45ZR17	99W XL	25.63	9.76	7.5	10	1709	50	400AA
	18"	225/40ZR18	92W XL	24.88	9.25	8	10	1389	50
225/45ZR18		95W XL	25.87	9.25	7.5	10	1521	50	400AA
225/50R18		-	-	-	-	-	-	-	-
225/60R18		100V	28.62	9.25	6.5	10	1764	44	400AA
235/40ZR18		95W XL	25.24	9.76	8.5	10	1521	50	400AA
235/45R18		94V	26.26	9.76	8	10	1477	44	400AA
235/45ZR18		94W	26.26	9.76	9	10	1477	44	400AA
235/50ZR18		97W	27.17	10.04	8.5	10	1609	44	400AA
235/55ZR18		100W	28.15	10.04	8.5	10	1764	44	400AA
235/60R18		107V XL	30.16	9.69	8	10	2149	46	400AA
235/65R18		106H XL	31.14	-	8	10	2094	46	400AA
245/40ZR18		97W XL	25.63	9.76	8.5	10	1609	50	400AA
245/45ZR18	96W	26.57	9.69	8.5	10	1510	44	400AA	
245/45ZR18	100W XL	26.57	9.69	8	10	1764	50	400AA	
19"	225/40ZR19	99W XL	27.06	9.25	8.5	10	1433	50	400AA
	225/40ZR19	93W XL	26.98	10.16	9.5	10	1709	50	400AA
	225/55R19	99V	28.51	9.45	8	10	1709	44	400AA
	235/35ZR19	91W XL	25.24	9.49	8.9	10	1356	50	400AA
	235/35ZR19	91Y XL	25.24	9.49	8.9	10	1356	50	400AA
	235/40ZR19	96W XL	26.26	9.76	9	10	1565	50	400AA
	235/55R19	105V XL	29.17	9.72	8.5	10	2039	50	400AA
	245/40ZR19	94W	26.57	9.69	9	10	1477	44	400AA
	20"	245/45ZR20	99W	28.66	9.65	8.5	10	1709	44

Tire sizes, technical data and product availability are subject to change. Please see arroyotires.com for the most up-to-date information.

GRAND SPORT 2

# TOURING All - Season Tires

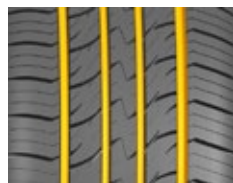
## ECO PRO A/S



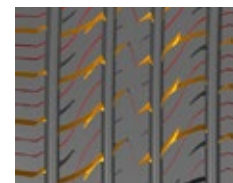
- Sizes - 14, 15, 16, 17 & 18" Rim Diameters 60, 65 & 70 Series Aspect Ratio
- 500 U.T.Q.G.
- 10/32 Tread Depth
- Uniquely Wide Flat Tread Radius
- Produces excellent steering progression and ride comfort.
- Jointless Nylon Band
- Increases strength in the high stress shoulder area.
- 2 Wide Steel Belts
- Strengthen the overall tread area.
- Provides stability, excellent wear character & long mileage.
- 9 more sizes on the way



### PATTERN INTRODUCTIONS



4 wide longitudinal grooves provide good drainage performance, keep excellent handling performance in wet road.



Grooves with different thickness and sipes design can destroy water film to guarantee the drainage performance effectively, and reduce noise greatly, providing a comfortable driving experience.



The middle portion continuous strong tire tread ribs can improve the steering stability and straight performance at high speeds, to ensure stability and security.



Optimization of pitch width and sequence effectively reduce the noise resonance, resulting in a quieter ride.

## ECO PRO A/S

Wheel Dia.	TIRE SIZE	LI / SR	PLY	AMERICAN STANDARD FOR THE RIM	REC RIM (MEASURING RIM) WIDTH (in.)	MAX LOAD (lbs)	MAX PSI	UTQG
14"	*NEW 165/65R14	79H	-	4.5-5-5.5	5	963	44	500 AA
	175/65R14	82H	-	5.0-6.0	5J	1047	44	500 A A
	175/70R14	88H	-	4.5-5.0-6.0	5J	1235	49	500 A A
	185/65R14	86H	-	5.0-5.5-6.5	5 1/2J	1168	44	500 A A
	185/70R14	88H	-	4.5-5.5-6.0	5 1/2J	1235	44	500 A A
	195/70R14	91H	-	5.0-6.0-6.5	6J	1356	44	500 A A
	205/70R14	98H	-	5.0-6.0-7.0	6J	1653	49	500 A A
15"	175/65R15	84H	-	5.0-6.0	5J	1102	44	500 A A
	185/60R15	84H	-	5.0-5.5-6.5	5 1/2J	1102	44	500 A A
	185/65R15	88H	-	5.0-5.5-6.5	5 1/2J	1235	44	500 A A
	195/60R15	88H	-	5.5-6.0-7.0	6J	1235	44	500 A A
	195/65R15	91H	-	5.5-6.0-7.0	6J	1356	44	500 A A
	205/60R15	91V	-	5.5-6.0-7.5	6J	1356	44	500 A A
	205/65R15	94H	-	5.5-6.0-7.5	6J	1477	44	500 A A
	205/70R15	96H	-	5.0-6.0-7.0	6J	1565	44	500 A A
	215/65R15	100H	-	6.0-6.5-7.5	6 1/2J	1764	49	500 A A
	215/70R15	98T	-	5.5-6.5-7.0	6 1/2J	1653	44	500 A A
	225/70R15	100T	-	6.0-6.5-7.5	6 1/2J	1764	44	500 A A
16"	185/60R16	86H	-	5.0-5.5-6.5	5 1/2J	1168	44	500 A A
	205/60R16	96V	-	5.5-6.0-7.5	6J	1565	49	500 A A
	205/65R16	95V	-	5.5-6.0-7.5	6J	1521	44	500 A A
	205/70R16	97H	-	5.0-6.0-7.0	6J	1609	44	500 A A
	215/60R16	95V	-	6.0-6.5-7.5	6 1/2J	1521	44	500 A A
	215/65R16	102H	-	6.0-6.5-7.5	6 1/2J	1874	49	500 A A
	225/60R16	98H	-	6.0-6.5-8.0	6 1/2J	1653	44	500 A A
	225/65R16	100H	-	6.0-6.5-8.0	6 1/2J	1764	44	500 A A
	235/65R16	107H	-	6.5-7.0-8.5	7J	2149	49	500 A A
17"	215/60R17	100H	-	6.0-6.5-7.5	6 1/2J	1764	49	500 A A
	215/65R17	99H	-	6.0-6.5-7.5	6 1/2J	1709	44	500 A A
	225/60R17	99V	-	6.0-6.5-8.0	6 1/2J	1709	44	500 A A
18"	225/60R18	104V	-	6.0-6.5-8.0	6 1/2J	1964	49	500 A A

Tire sizes, technical data and product availability are subject to change. Please see arroyotires.com for the most up-to-date information.



**ARROYO RUN FLAT** 

16"	195/55R16	17"	205/45R17
	205/55R16		205/50R17
	205/55R17		
	225/45R17		
	225/50R17		
	225/55R17		

**RUN FLAT** 



**ARROYO RUN FLAT** 

18"	205/40R18	19"	225/40R19	20"	245/35R20
	225/40R18		225/45R19		245/40R20
	225/45R18		235/45R19		245/45R20
	225/50R18		235/55R19		255/45R20
	235/50R18		245/40R19		275/30R20
	235/55R18		245/45R19		275/35R20
	235/60R18		245/50R19	275/40R20	
	245/40R18		255/35R19	275/45R20	
	245/45R18		255/50R19	315/35R20	
	245/50R18		265/50R19	21"	275/40R21
255/35R18	275/35R19	275/45R21			
255/40R18	275/40R19	285/35R21			
		315/35R21			
22"	275/40R22				
	315/35R22				

**RUN FLAT** 



**RUN FLAT** 

**HIGH STABILITY CANTERING RIB**

The solid rib in the center of the tire ensures straight-line driving stability

**WET GRIP GROOVE DESIGN**

Four wide, longitudinal grooves channel road water, while lateral grooves work to direct it out from under the tire

**LOW TREAD WEAR SHOULDER DESIGN**

The shoulder is integrated with heat-resisting bars to keep the tread blocks stable and protect them from irregular wear. For the same reason, the design also improves high-speed cornering stability

**FUEL-SAVING TREAD COMPOUND**

The Arroyo Run Flat advanced tread compound reduces rolling resistance, which helps boost fuel efficiency and lower exhaust emissions

**QUIET-RIDE PITCH ALIGNMENT**

Optimized tread pitch width and alignment for quiet resonance and reduced road noise



**RUN FLAT** 

**OPTIMIZED TREAD DESIGN**

Our computer-aided design has optimized the tread pitch and alignment which reduces road noise levels at higher speeds

**WET-GRIP SIPES AND GROOVES**

Added sipes and grooves improve aquaplaning resistance and provide better handling on wet roads

**DRY GRIP**

Tread design creates a much larger contact area allowing better stability, cornering and control

**ADVANCED TREAD COMPOUND**

Advanced silica tread compound boosts rolling resistance and helps improve fuel efficiency

**LATERAL AND LONGITUDINAL GROOVES**

Deliver smooth handling and better control on dry and wet roads

**Additional Sizes Coming Soon!**

## ALL-SEASON TOURING S.U.V. & Crossover H/T Tires

### ECO PRO H/T



- S.U.V. Sizes - 15, 16, 17, 18, 19 & 20"  
Rim Diameters 55, 60, 65, 70 & 75 Series Aspect Ratio
- 600 U.T.Q.G.
- 10, 11 & 13/32 Tread Depth
- Uniquely Wide & Flat Tread Radius Produces excellent steering progression and ride comfort.
- High Rubber to void ratio with variable shaped tread block elements.  
Produces great wear character and long mileage.  
Tread block noise is cancelled out creating sound comfort.
- Jointless Nylon Band Spiral wound for uniformity  
Increases strength in the high stress shoulder area.
- 2 Wide Steel Belts  
Strengthen the overall tread area.  
Provides stability, excellent wear character & long mileage.
- More sizes on the way



### ECO PRO H/T

Wheel Dia.	TIRE SIZE	LI / SR	PLY	AMERICAN STANDARD FOR THE RIM	REC RIM (MEASURING RIM) WIDTH (in.)	MAX LOAD (lbs)	MAX PSI	UTQG	
15"	235/75R15	109T	-	6.0-6.5-8.0	6 1/2J	2271	49	600 A B	
	215/70R16	100H	-	5.5-6.5-7.0	6 1/2J	1764	44	600 A B	
	225/70R16	103T	-	6.0-6.5-7.5	6 1/2J	1929	44	600 A B	
	225/75R16	104T	-	7.5-8.5-10.0	6J	1984	44	600 A B	
	235/70R16	106H	-	6.0-7.0-8.0	7J	2094	44	600 A B	
	245/70R16	111T	-	6.5-7.0-8.0	7J	2403	49	600 A B	
	245/75R16	111T	-	6.5-7.0-8.0	7J	2403	44	600 A B	
	255/70R16	111T	-	6.5-7.5-8.5	7 1/2J	2403	44	600 A B	
	265/70R16	112H	-	7.0-8.0-9.0	8J	2469	44	600 A B	
	265/75R16	116T	-	7.0-7.5-9.0	7 1/2J	2756	44	600 A B	
16"	LT215/85R16	115/112Q	10/E	5.5-6.0-7.0	6J	2680	80	-	
	LT225/75R16	115/112S	10/E	6.0-7.5	6J	2680	80	-	
	LT235/85R16	120/116R	10/E	6.0-6.5-7.5	6 1/2J	3042	80	-	
	LT245/75R16	120/116S	10/E	6.5-7.0-8.0	7J	3042	80	-	
	LT265/75R16	123/120R	10/E	7.0-7.5-9.0	7 1/2J	3415	80	-	
	17"	225/65R17	102T	-	6.0-6.5-8.0	6 1/2J	1874	44	600 A B
		235/65R17	108H	-	6.5-7.0-8.5	7J	2205	49	600 A B
		245/65R17	107H	-	7.0-8.5	7J	2149	44	600 A B
		245/70R17	114H	-	6.5-7.0-8.0	7J	2601	49	600 A B
		255/65R17	110H	-	7.0-7.5-9.0	7 1/2J	2337	44	600 A B
255/70R17		112H	-	6.5-7.5-8.5	7 1/2J	2469	44	600 A B	
265/65R17		116H	-	7.5-8.0-9.5	8J	2756	49	600 A B	
265/70R17		115H	-	7.0-8.0-9.0	8J	2679	44	600 A B	
LT235/80R17		120/117Q	10/E	6.0-6.5-7.5	6 1/2J	3085	80	-	
LT245/70R17		119/116S	10/E	6.5-7.0-8.0	7J	2998	80	-	
18"	LT245/75R17	121/118S	10/E	6.5-7.0-8.0	7 J	3197	80	-	
	LT265/70R17	121/118S	10/E	7.0-8.0-9.0	8J	3197	80	-	
	235/55ZR18	104W	-	6.5-7.5-8.5	7 1/2J	1984	49	600 A B	
	235/60R18	107V	-	6.5-7.0-8.5	7J	2149	49	600 A B	
18"	235/65R18	110H	-	6.5-7.0-8.5	7J	2337	49	600 A B	

Tire sizes, technical data and product availability are subject to change. Please see arroyotires.com for the most up-to-date information.

# ALL-SEASON TOURING S.U.V. & Crossover H/T Tires

## ECO PRO H/T

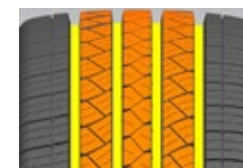


### ECO PRO H/T

Wheel Dia.	TIRE SIZE	LI / SR	PLY	AMERICAN STANDARD FOR THE RIM	REC RIM (MEASURING RIM) WIDTH (in.)	MAX LOAD (lbs)	MAX PSI	UTQG
18"	245/60R18	105H	-	7.0-8.5	7J	2039	44	600 A B
	255/65R18	111T	-	7.0-7.5-9.0	7 1/2J	2403	44	600 A B
	255/70R18	113H	-	6.5-7.5-8.5	7 1/2J	2535	44	600 A B
	265/60R18	114V	-	7.5-8.0-9.5	8J	2601	49	600 A B
	265/65R18	114H	-	7.5-8.0-9.5	8J	2601	44	600 A B
	265/70R18	116H	-	7.0-8.0-9.0	8J	2756	44	600 A B
	275/65R18	116H	-	7.5-8.0-9.5	8J	2756	44	600 A B
	LT275/65R18	123/120S	10/E	8.0-9.5	8J	3417/3086	80	-
	LT275/70R18	125/122S	10/E	7.0-8.0-9.0	8J	3638/3307	80	-
19"	255/60R19	109H	-	-	7 1/2J	2271	44	600 A B
20" <i>*NEW</i>	245/50ZR20	102W	-	7.0-7.5-8.5	7 1/2J	1874	44	600 A B
	245/60R20	107H	-	7.0-8.5	7J	2149	44	600 A B
	265/60R20	112H	-	7.5-8-8.5	8	2469	44	600 A B
	275/60R20	115V	-	7.5-8.0-9.5	8J	2679	44	600 A B

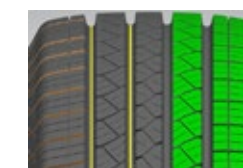
Tire sizes, technical data and product availability are subject to change. Please see arroyotires.com for the most up-to-date information.

### PATTERN INTRODUCTIONS



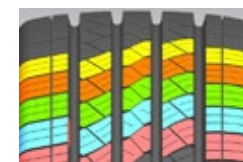
Four wide longitudinal grooves enhance water evacuation, improving cornering and handling performance on wet roads.

3 directional continuous center ribs ensure straight driving stability. Cross-interlocking groove design provides reliable grip and reduces noise. Sharp edges of the lateral grooves cut through water film effectively, and resist hydroplaning of the tire.



Optimized depth of main grooves ensure high mileage. Optimal ratio of tread rib ensures efficient ground contact area while ensuring tire load carrying capacity. Depth of the shoulder grooves design, effectively reduce the tire heat,

providing a reliable load durability.



Optimization of 5 variable pitch sequence, effectively reduces the noise resonance, improving comfort. Optimized pitch width, effectively improves the load carrying capacity while reducing noise.

## ALL-SEASON TOURING S.U.V. & Crossover H/T Tires

### ECO PRO H/T2



- S.U.V. Sizes - 15, 16, 17, 18 & 20" Rim Diameters 55, 60, 65, 70 & 75 Series Aspect Ratio
- 600 U.T.Q.G.
- 10, 11 & 12/32 Tread Depth
- Uniquely Wide & Flat Tread Radius Produces excellent steering progression and ride comfort.
- High Rubber to void ratio with variable shaped tread block elements. Produces great wear characteristics and long mileage. Tread block noise is cancelled out creating sound comfort.
- Jointless Nylon Band Spiral wound for uniformity Increases strength in the high stress shoulder area.
- 2 Wide Steel Belts Strengthen the overall tread area. Provides stability, excellent wear character & long mileage.
- More sizes on the way

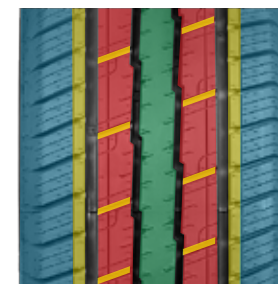


### ECO PRO H/T2

Wheel Dia.	TIRE SIZE	SERVICE DESC./PLY RATING	OVERALL DIAMETER (in.)	SECTION WIDTH (in.)	APPROVED RIM (MEASURING RIM) WIDTH (in.)	TREAD DEPTH (in/32)	MAX LOAD (lbs)	MAX PSI	UTQG
15"	235/75R15	105S	29.06	9.69	7.7	11	2039	46	600AA
	225/65R16	100H	27.56	9.06	7.5	11	1764	46	600AA
16"	235/70R16	106T	29.06	9.65	7.5	12	2094	46	600AA
	LT225/75R16	115/112S	29.29	10.47	7.5	12	2680/2470	80	-
	LT245/75R16	120/116S	30.51	9.88	7.5	12	3042/2778	80	-
	LT265/75R16	123/120S	31.65	10.55	8.5	12	3415/3085	80	-
17"	225/60R17	99H	27.56	9.02	7.5	11	1709	46	600AA
	225/65R17	102H	28.46	9.06	7.5	11	1874	46	600AA
	235/65R17	104H	29.06	9.65	7.7	11	1984	46	600AA
	245/65R17	111T XL	29.53	9.82	8	11	2149	51	600AA
	265/70R17	115T	31.65	10.63	8.5	11	2680	46	600AA
	LT245/70R17	119/116S	30.51	9.88	8	12	3000/2755	80	-
	LT245/75R17	121/118S	31.50	8.09	7.5	12	3195/2910	80	-
18"	LT265/70R17	121/118S	31.65	10.63	8.5	12	3195/2910	80	-
	235/60R18	107V XL	29.06	9.65	7.7	11	2149	51	600AA
	235/65R18	106H	30.00	9.57	7.7	11	2094	46	600AA
	245/60R18	105H	29.53	9.76	8	11	2039	46	600AA
20"	LT275/70R18	125/122S	33.19	10.98	8.5	12	3640/3305	80	-
	275/55R20	117H XL	31.81	11.06	9.3	11	2833	51	600AA

Tire sizes, technical data and product availability are subject to change. Please see arroyotires.com for the most up-to-date information.

### PATTERN INTRODUCTIONS



Arroyo Eco Pro H/T2 is a Highway Terrain tire for crossover, sport utility & light truck vehicles. It brings performance and durability while providing style and comfort and gives you grip throughout all seasons. These tires are characterized by their sturdy design, chip-resistant compound which extends its tread life. Its tread groove design helps to improve traction during wet road and winter season conditions. The heavier duty sizes are built to give a better grip during heavy load conditions. Ride comfort is provided with the internal composition of rubber below the tread. Its structure is built on ultra high strength steel belts strengthened with spirally wrapped nylon yielding excellent braking and stability.



**UHP All-Season**  
**Ultra High Performance**

**ULTRA SPORT A/S**



- S.U.V. Sizes - 19, 20, 22, 24 & 26" Rim Diameters 30, 35, 40, 45, 50, & 55 Series Aspect Ratio
- 500 U.T.Q.G.
- 10/32 Tread Depth
- Uniquely Wide & Flat Tread Radius Produces excellent steering progression and ride comfort.
- Aggressive "Grown-Up" tread design. Produces great traction for all weather and road surfaces. Tightly packed shoulder blocks are quiet and wear evenly.
- Jointless Nylon Band Spiral wound for uniformity Increases strength in the high stress shoulder area.
- 2 Wide Steel Belts Strengthen the overall tread area. Provides stability, excellent wear character & long mileage.



**ULTRA SPORT A/S**

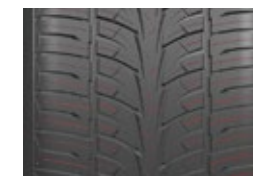
Wheel Dia.	TIRE SIZE	LI / SR	PLY	AMERICAN STANDARD FOR THE RIM	REC RIM (MEASURING RIM) WIDTH (in.)	MAX LOAD (lbs)	MAX PSI	UTQG
19"	255/50ZR19	107Y	-	7.0-8.0-9.0	8J	2149	49	500 A A
20"	275/45R20	110V	-	8.5-9.0-10.5	9J	2337	49	500 A A
	275/55R20	117V	-	7.5-8.5-9.5	8 1/2J	2833	49	500 A A
22"	235/30ZR22	90W	-	-	8 1/2J	1323	49	500 A A
	245/30ZR22	95W	-	-	8 1/2J	1521	49	500 A A
	265/35ZR22	102W	-	9.0-9.5-10.5	9 1/2J	1874	49	500 A A
	265/40ZR22	106W	-	-	9 1/2J	2094	49	500 A A
	285/45R22	114V	-	9.0-9.5-10.5	9 1/2 J	2601	49	500 A A
24"	305/40R22	114V	-	10.0-11.0-12.0	11J	2601	49	500 A A
	295/35ZR24	110W	-	-	10 1/2J	2337	49	500 A A
26"	305/35R24	112V	-	10.0-11.0-12.0	11J	2469	49	500 A A
	295/30ZR26	107W	-	-	10 1/2 J	2149	49	500 A A
26"	305/30R26	109V	-	-	11J	2271	49	500 A A

Tire sizes, technical data and product availability are subject to change. Please see arroyotires.com for the most up-to-date information.

**PATTERN INTRODUCTIONS**



Central longitudinal continuous main rib, provides straight driving stability and high speed controllability ensuring safety. Twin longitudinal main grooves with 3D groove walls are effective in preventing hydroplaning on wet roads, and reduce noise. Continuous blocks ensure efficient ground contact area, providing extreme control and stability.



Zig Zag grooves, cross grooves and sipes improve the all-weather performance of the tire.



With the advanced design concept silica compound and 3D sips distribution ULTRA SPORT A/S provides reliable grip and excellent braking performance in wet and dry conditions.



Optimization of variable random pitch sequence, minimizes noise generation contributing a quiet and comfortable ride.



**ULTRA SPORT *AVS***

**UHP All-Season  
Ultra High Performance**

**RAZZO SPORT A/S**



- 500 U.T.Q.G.
- 10/32 Tread Depth
- Uniquely Wide & Flat Tread Radius Produces excellent steering progression and ride comfort.
- Aggressive "Grown-Up" tread design. Produces great traction for all weather and road surfaces. Tightly packed shoulder blocks are quiet and wear evenly.
- Jointless Nylon Band Spiral wound for uniformity Increases strength in the high stress shoulder area.
- 2 Wide Steel Belts Strengthen the overall tread area. Provides stability, excellent wear character & long mileage.



**RAZZO SPORT A/S**

Wheel Dia.	TIRE SIZE	LI / SR	PLY	AMERICAN STANDARD FOR THE RIM	REC RIM (MEASURING RIM) WIDTH (in.)	MAX LOAD (lbs)	MAX PSI	UTQG
20"	275/55R20	117V XL	-	7.5-8.5-9.5	8 1/2J	2833	49	500 A A
22"	275/50R22	115H XL		COMING SOON				
	285/45R22	114V		COMING SOON				

Tire sizes, technical data and product availability are subject to change. Please see arroyotires.com for the most up-to-date information.

**NEW SIZES COMING SOON**





**ULTRA SPORT *AVS***

# HIGHWAY-COMMERCIAL All-Season Tires VAN PRO 2



- Symmetrical/Non-Directional Commercial Hwy A/S
- Speed Ratings – Q, R – 6 PR
- 65-75 Series, 12-14-16 in. rim sizes
- 4 Wide Circumferential Ribbs for outstanding strength and load support
- 3 Zigzag Circumferential grooves for water evacuation and all-season traction.
- Made in the European Union Designed for drivers of commercial pick-up trucks and vans for rugged all-season commercial use



## VAN PRO 2

Wheel Dia.	TIRE SIZE	SERVICE DESC./PLY RATING	OVERALL DIAMETER (in.)	SECTION WIDTH (in.)	APPROVED RIM (MEASURING RIM) WIDTH (in.)	TREAD DEPTH (in/32)	MAX LOAD (lbs)	MAX PSI	UTQG
12"	5.00R12C	-	-	-	-	-	-	-	-
14"	185R14C	102/100Q	25.51	7.52	5.5	10	1874/1764	65	-
	195R14C	-	-	-	-	-	-	-	-
	205/75R14C	-	-	-	-	-	-	-	-
15"	195/70R15C	104/102R	25.71	7.87	6.5	12	1984/1874	65	-
	195R15C	-	-	-	-	-	-	-	-
	205/70R15C	-	-	-	-	-	-	-	-
	215/70R15C	-	-	-	-	-	-	-	-
16"	225/70R15C	-	-	-	-	-	-	-	-
	195/75R16C	-	-	-	-	-	-	-	-
	195/75R16C	107/105R	27.17	7.64	5.5	12	2150/2039	69	-
	205/65R16C	-	-	-	-	-	-	-	-
	205/75R16C	-	-	-	-	-	-	-	-
	215/65R16C	-	-	-	-	-	-	-	-
	215/75R16C	-	-	-	-	-	-	-	-
225/65R16C	-	-	-	-	-	-	-	-	
	235/65R16C	121/119Q	27.99	9.45	7	12	3197/2998	83	-

Tire sizes, technical data and product availability are subject to change. Please see arroyotires.com for the most up-to-date information.

## PATTERN INTRODUCTIONS



A Commercial Highway All Season tire providing a stable comfortable ride engineered to resist abnormal wear. Designed for drivers of commercial pickup trucks and vans for commercial grade performance with increased handling in all seasons.

## HIGHWAY-COMMERCIAL All-Season Tires VAN PRO 3



- Symmetrical/Non-Directional Commercial Hwy A/S
- Speed Ratings – Q, R – 6 PR
- 65-75 Series, 14-16 in. rim sizes

- 4 Wide Circumferential Ribs for outstanding strength and load support
- 3 Zigzag Circumferential grooves for water evacuation and all-season traction.
- Made in the European Union
- Designed for drivers of commercial pick-up trucks and vans for rugged all-season commercial use



### VAN PRO 3

Wheel Dia.	TIRE SIZE	SERVICE DESC./PLY RATING	OVERALL DIAMETER (in.)	SECTION WIDTH (in.)	APPROVED RIM (MEASURING RIM) WIDTH (in.)	TREAD DEPTH (in/32)	MAX LOAD (lbs)	MAX PSI	UTQG
14"	195R14C	106/104R	26.22	7.9	6	12	2094/1984	65	-
	205R14C	-	-	-	-	-	-	-	-
	215R14C	-	-	-	-	-	-	-	-
16"	195/75R16C	107/105R	27.48	8.3	6.5	12	2150/2039	69	-
	235/65R16C	121/119Q	27.99	9.4	8	12	3197/2998	83	-

Tire sizes, technical data and product availability are subject to change. Please see arroyotires.com for the most up-to-date information.

## HIGHWAY-COMMERCIAL All-Season Tires VAN PRO



- Symmetrical/Non-Directional Commercial Hwy A/S
- Speed Ratings – Q, R – 6 PR
- 65-75 Series, 16 in. rim size

- 4 Wide Circumferential Ribs for outstanding strength and load support
- 3 Zigzag Circumferential grooves for water evacuation and all-season traction.
- Made in Thailand
- Designed for drivers of commercial pick-up trucks and vans for rugged all-season commercial use



### VAN PRO

Wheel Dia.	TIRE SIZE	LI / SR	PLY	AMERICAN STANDARD FOR THE RIM	REC RIM (MEASURING RIM) WIDTH (in.)	MAX LOAD (lbs)	MAX PSI	UTQG
15" NEW	185/60R15C	94/92T	6PR	5-5.5-6	5 1/2	1477	55	-
16"	195/75R16C	110/108R	10/E	-	5 1/2J	2335	77	-
	235/65R16C	121/119R	10/E	-	7J	3195	83	-
	285/65R16C	COMING SOON						

Tire sizes, technical data and product availability are subject to change. Please see arroyotires.com for the most up-to-date information.



# TAMAROCK A/T

SUV Metric Sizes - LT Metric & High Float Sizes 15, 16, 17, 18, 20 & 22" Rim Diameters 40, 45, 55, 60, 70 & 75 Series Aspect Ratios 12, 13, 15,16 & 17/32 Tread Depth Super Wide & Flat Tread Radius Produces excellent steering progression and ride comfort. Attractive Marked Tread Design Produces great traction for all weather and road surfaces. Wrap around shoulder elements are profound and functional. Jointless Nylon Band Spiral wound for uniformity Increases strength in the high stress shoulder area. 2 Wide Steel Belts Strengthen the overall tread area. Provides stability, excellent wear character & long mileage.



## ATTACK ANY TERRAIN WITH CONFIDENCE



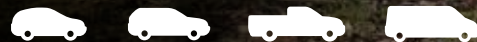
LONGER  
TREAD LIFE



STRONGER  
SIDEWALL



QUIETER  
RIDE



### ALL-TERRAIN TAMAROCK A/T TIRES



ALL-TERRAIN  
Tamarock A/T Tires

**TAMAROCK A/T**



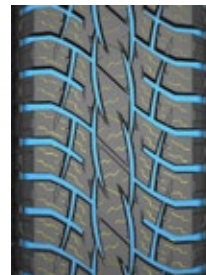
- SUV Metric Sizes - LT Metric & High Float Sizes 15, 16, 17, 18, 20 & 22" Rim Diameters
- 40, 45, 55, 60, 70 & 75 Series Aspect Ratios
- 12, 13, 15, 16 & 17/32 Tread Depth
- Super Wide & Flat Tread Radius Produces excellent steering progression and ride comfort.
- Attractive Marked Tread Design Produces great traction for all weather and road surfaces. Wrap around shoulder elements are profound and functional.
- Jointless Nylon Band Spiral wound for uniformity Increases strength in the high stress shoulder area.
- 2 Wide Steel Belts Strengthen the overall tread area. Provides stability, excellent wear character & long mileage.



PATTERN INTRODUCTIONS



- Strong Pattern Block Design Strong central pattern blocks ensure stable handling performance and powerful control force under off-road conditions. Rugged blocks can prevent cutting, scratching and impact damage.
- Solid Square Shoulder Strong shoulder provide adequate dry traction and turning performance.



- Excellent Drainage Performance Four wide longitudinal grooves can evacuate water effectively, enhance handling and steering on wet road surface .
- Special Multi-Angle Sipe Design Irregular sipes design can reduce noise and improve grip on snow-covered roads effectively, to ensure excellent control performance.

TAMAROCK A/T

Wheel Dia.	TIRE SIZE	LI / SR	PLY	AMERICAN STANDARD FOR THE RIM	REC RIM (MEASURING RIM) WIDTH (in.)	MAX LOAD (lbs)	MAX PSI	UTQG	
15"	31x10.50R15LT	109S	6PR-LRC	7.0-8.5-9.0	8 1/2J	2270	50	-	
16"	265/70R16	112T	-	7.0-8.0-9.0	8J	2469	44	500AA	
	LT245/75R16	120/116R	10PR-LRE	6.5-7.0-8.0	7J	3042	80	-	
	LT265/75R16	123/120R	10PR-LRE	7.0-7.5-9.0	7 1/2J	3415	80	-	
	LT285/75R16	126/123R	10PR-LRE	7.5-8.0-9.5	8J	3750	80	-	
17"	*NEW 225/65R17	102T	-	6-6.5-7	6.5	1874	44	500AA	
	*NEW 235/65R17	104T	-	6.5-7-7.5	7	1984	44	500AA	
	245/75R17	110H	-	6.5-7.0-8.0	7J	2337	44	500 A A	
	255/75R17	115T	-	6.5-7.0-8.5	7J	2679	44	500 A A	
	265/65R17	116T	-	7.5-8.0-9.5	8J	2756	50	500 A A	
	265/70R17	113T	-	7.0-8.0-9.0	8J	2535	44	500AA	
	LT245/75R17	121/118S	10PR-LRE	6.5-7.0-8.0	7J	3195	80	-	
	LT265/70R17	121/118S	10PR-LRE	7.0-8.0-9.0	8J	3195	80	-	
18"	*NEW 225/55R18	102T XL	-	6.5-7-7.5	7	1874	49	500AA	
	*NEW 225/60R18	104T XL	-	6-6.5-7	6 1/2	1984	49	500AA	
	*NEW 265/60R18	114T XL	-	7.5-8-8.5	8	2601	49	500AA	
	265/65R18	114H	-	7.5-8.0-9.5	8J	2601	44	500 AA	
	275/65R18	114T	-	7.5-8.0-9.5	8J	2601	44	500AA	
	LT265/70R18	124/121S	10PR-LRE	7.0-8.0-9.0	8J	3527	80	-	
	LT275/65R18	123/120S	10PR-LRE	8.0-9.5	8J	3417	80	-	
	LT275/70R18	125/122S	10PR-LRE	7.0-8.0-9.0	8J	3640	80	-	
	*Coming Soon	LT285/65R18	125/122S	-	*Coming Soon	-	*Coming Soon	-	-
	*NEW	LT285/75R18	129/126Q	10PR	7.5-8-8.5	8	4080	80	-
*NEW	265/50R20	111T XL	-	8-8.5-9	8 1/2	2403	49	500AA	
	275/55R20	117H	-	7.5-8.5-9.5	8 1/2J	2833	49	500AA	
	275/60R20	119H	-	7.5-8.0-9.5	8J	2998	49	500AA	
	LT265/60R20	121/118S	10PR-LRE	8.0-9.5	8J	3197	80	-	
	LT275/65R20	126/123S	10PR-LRE	8.0-9.5	8J	3750	80	-	
	LT285/55R20	122/119S	10PR-LRE	8.5-9.0-10.0	9J	3305	80	-	
*NEW	275/50R22	115T XL	-	8-8.5-9	8.5	2679	49	500AA	
	285/45R22	116H	-	9 1/2J	-	2756	49	500AA	

Tire sizes, technical data and product availability are subject to change. Please see arroyotires.com for the most up-to-date information.

**ENJOY YOUR  
JOURNEY**



**TAMAROCK A/T**

**ARROYO**  
TIRES

**ARROYO**  
TIRES

SIDEWALL  
3PLY

# TAMAROCK M/T

Moderated Rubber to Void Ratio Reduces noise, Increases Wear character and Mileage. Attractive Marked Tread Design Produces great traction for all surface conditions. Aggressive & Profound Wrap Around Shoulder Elements are functional. 3 Polyester Body Plies for strength and resilience. 2 Wide Steel Belts Strengthen the overall tread area. Provides stability, excellent wear character & long mileage. Jointless Nylon Band Spiral wound for uniformity Increases strength in the high stress shoulder area.



AGGRESSIVE  
TREAD DESIGN



LONGER  
TREAD LIFE



STRONGER  
SIDEWALL



QUIETER  
RIDE



ARROYOTIRES.COM

**MUD-TERRAIN**  
Tamarock M/T Tires

**TAMAROCK M/T**



- SUV Metric Sizes - High Float  
Sizes 17, 18, 20 & 22"  
Rim Diameters
- 50, Series Aspect Ratios  
& High Float
- 19/32 Tread Depth
- Moderated Rubber to Void Ratio  
Reduces noise, Increases Wear  
character and Mileage.  
Attractive Marked Tread Design  
Produces great traction for all  
surface conditions.  
Aggressive & Profound Wrap  
Around Shoulder Elements  
are functional.
- 3 Polyester Body Plies for strength  
and resilience
- 2 Wide Steel Belts  
Strengthen the overall tread area.  
Provides stability, excellent wear  
character & long mileage.
- Jointless Nylon Band  
Spiral wound for uniformity  
Increases strength in the high  
stress shoulder area.

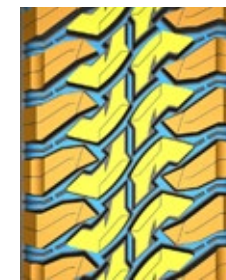


**TAMAROCK M/T**

Wheel Dia.	TIRE SIZE	LI / SR	PLY	AMERICAN STANDARD FOR THE RIM	REC RIM (MEASURING RIM) WIDTH (in.)	MAX LOAD (lbs)	MAX PSI	UTQG
17"	33x12.50R17LT	120Q	10PR/LRE	8.5-10.0-11.0	10J	3085	65	-
	35x12.50R17LT	125Q	10PR/LRE	8.0-10.0-10.5	10J	3640	65	-
18"	33x12.50R18LT	122Q	12PR/LRF	8.5-10.0-11.0	10J	3305	80	-
	35x12.50R18LT	128Q	12PR/LRF	8.5-10.0-11.0	10J	3970	80	-
20"	33x12.50R20LT	119Q	12PR/LRF	8.5-10.0-11.0	10J	3000	80	-
	35x12.50R20LT	125Q	12PR/LRF	8.5-10.0-11.0	10J	3640	80	-
22"	33x12.50R22LT	114Q	12PR/LRF	8.5-10.0-11.0	10J	2600	80	-
	35x12.50R22LT	121Q	12PR/LRF	8.5-10.0-11.0	10J	3195	80	-

Tire sizes, technical data and product availability are subject to change. Please see arroyotires.com for the most up-to-date information.

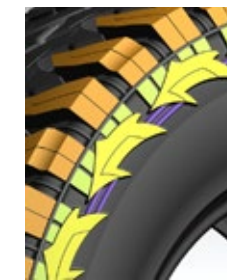
**PATTERN INTRODUCTIONS**



- Excellent Driving Performance  
The optimum ratio of rubber and void on the tread and the special stepped edge treatment removal of dirty under extreme off-road conditions effectively, ensuring the excellent driving performance.

- Water And Snow Drainage Performance  
Wide and deep pattern groove design

enhances the anti-skip performance of tires under rainy and snowy road greatly.



- Excellent Gripping Design  
Solid square shoulder increases the contact area between tread and ground greatly, improves the grip and bearing capacity of wet and dry road, making more stable driving.

- Wearing And Stabbing Resistance  
Aggressive sidewall design prevents damage and enhances grip when in deep mud or rock climbing.



# TAMAROCK R/T

Super aggressive style with refined road manners. Large laterally oriented blocks provide extra biting grip with stepped-edge and bold sidewall elements. Lateral groove and zig-zag valleys create channels for water evacuation and snow traction.

With a wide flat contact patch, the stable block design gives constant contact with the road ensuring smooth driving, aggressive grip in handling and outstanding all-weather performance on the road.

Off-road, the many biting elements of the sidewalls, blocks and grooves will make short work of rocks, mud, sand or snow.



LONGER  
TREAD LIFE



STRONGER  
SIDEWALL



QUIETER  
RIDE



# RUGGED-TERRAIN TAMAROCK R/T TIRES

**RUGGED-TERRAIN**  
Tamarock R/T Tires

**TAMAROCK R/T**



Super aggressive style with refined road manners. Large laterally oriented blocks provide extra biting grip with stepped- edge and bold sidewall elements. Lateral groove and zig-zag valleys create channels for water evacuation and snow traction. With a wide flat contact patch, the stable block design gives constant contact with the road ensuring smooth driving, aggressive grip in handling and outstanding all-weather performance on the road. Off-road, the many biting elements of the sidewalls, blocks and grooves will make short work of rocks, mud, sand or snow.



**DUAL  
SIDEWALL  
FINISH**

**TAMAROCK R/T**

Wheel Dia.	TIRE SIZE	LI / SR	PLY	AMERICAN STANDARD FOR THE RIM	REC RIM (MEASURING RIM) WIDTH (in.)	MAX LOAD (lbs)	MAX PSI	UTQG
16" *NEW	LT265/75R16	123/120Q	10/E	7-7.5-8	7.5	3415	80	-
	*NEW 265/65R17	116T XL	-	7.5-8-8.5	8	2756	49	500AA
	*NEW 265/70R17	115T	-	7.5-8-8.5	8	2679	44	500AA
	*NEW 33x12.50R17LT	124Q	12/F	9.5-10-10.5	10	3525	95	-
17" *NEW	*NEW 35x12.50R17LT	121Q	12/F	9.5-10-10.5	10	3195	95	-
	*NEW 37x12.50R17LT	128Q	12/F	9.5-10-10.5	10	3970	65	-
	*NEW LT265/70R17	123/120Q	10/E	7.5-8-8.5	8	3415	80	-
	*NEW LT285/70R17	126/123Q	10/E	8-8.5-9	8 1/2	3750	80	-
18" *NEW	*NEW LT295/70R17	128/125Q	10/E	8-8.5-9	8 1/2	3970	80	-
	*NEW LT315/70R17	128/125Q	12/F	9-9.5-10	9 1/2	3750	80	-
	*NEW 265/60R18	114T XL	-	7.5-8-8.5	8	2601	49	500AA
	*NEW 265/65R18	116T XL	-	7.5-8-8.5	8	2756	49	500AA
20" *NEW	*NEW 265/70R18	116T	-	7.5-8-8.5	8	2756	44	500AA
	*NEW 275/65R18	116T XL	-	7.5-8-8.5	8	2756	49	560AA
	*NEW 33x12.50R18LT	118Q/122Q	12/F	9.5-10-10.5	10	3305	80	-
	*NEW 35x12.50R18LT	123Q/128Q	12/F	9.5-10-10.5	10	3970	80	-
	*NEW LT265/70R18	124/121Q	10/E	7.5-8-8.5	8	3525	80	-
	*NEW LT275/65R18	123/120Q	10/E	7.5-8-8.5	8	3415	80	-
	*NEW LT275/70R18	128/125Q	12/F	7.5-8-8.5	8	3640	80	-
	*NEW LT285/65R18	125/122Q	10/E	8-8.5-9	8 1/2	3640	80	-
	*NEW LT285/75R18	129/126Q	10/E	7.5-8-8.5	8	4080	80	-
	*NEW LT295/70R18	129/126Q	10/E	8-8.5-9	8 1/2	4080	80	-
20" *NEW	*NEW 265/50R20	111T XL	-	8-8.5-9	8 1/2	2403	49	500AA
	*NEW 275/55R20	117T	-	7.5-8.5-9.5	8 1/2J	2833	50	500AA
	*NEW 275/60R20	116T XL	-	7.5-8-8.5	8	2756	49	500AA
	*NEW 305/55R20	116T	-	9-9.5-10	9 1/2	2756	44	500AA
	*NEW 33x12.50R20LT	119Q	12/F	8.5-10.0-11.0	10J	3000	80	-
	*NEW 35x12.50R20LT	125/121Q	12/F	9.5-10-10.5	10	3640	80	-
20" *NEW	*NEW 37x12.50R20LT	128Q	12/F	9.5-10-10.5	10	3750	65	-
	LT275/65R20			COMING SOON				

**RUGGED-TERRAIN**  
Tamarock R/T Tires

**TAMAROCK R/T**



**TAMAROCK R/T**

Wheel Dia.	TIRE SIZE	LI / SR	PLY	AMERICAN STANDARD FOR THE RIM	REC RIM (MEASURING RIM) WIDTH (in.)	MAX LOAD (lbs)	MAX PSI	UTQG
20"	*NEW LT285/55R20	122/119Q	10/E	8.5-9-9.5	10	3305	80	-
	*NEW LT285/60R20	125/122Q	10/E	8-8.5-9	8 1/2	3640	80	-
	*NEW LT285/65R20	127/124Q	10/E	8-8.5-9	8 1/2	3860	80	-
	*NEW LT295/60R20	126/123Q	10/E	8-8.5-9	8 1/2	3750	80	-
22"	*NEW 275/50R22	115T XL	-	8-8.5-9	8 1/2	2679	49	500AA
	*NEW 285/45R22	114H XL	-	9-9.5-10	9 1/2	2601	49	500AA
	*NEW 305/45R22	118H XL	-	9.5-10-10.5	10	2910	49	500AA
	*NEW 33x12.50R22LT	114/109Q	12/F	9.5-10-10.5	10	2600	80	-
	*NEW 35x12.50R22LT	121/117Q	12/F	9.5-10-10.5	10	3195	80	-
	*NEW 37x12.50R22LT	127/123Q	12/F	9.5-10-10.5	10	3860	80	-
24"	*NEW 33x12.50R24LT	106Q	12/F	11-11.5-12	11 1/2	1820	65	-
	*NEW 35x12.50R24LT	116Q	12/F	10-10.5-11	10 1/2	2405	65	-

Tire sizes, technical data and product availability are subject to change. Please see [arroyotires.com](http://arroyotires.com) for the most up-to-date information.

**PATTERN INTRODUCTIONS**



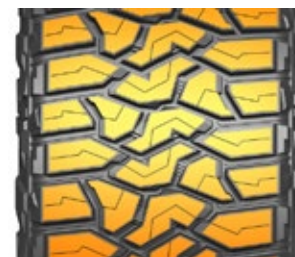
**Lateral Grooves and Zigzag longitudinal design**

Provide aggressive traction in rain, mud, snow and sand. Rock-crawler looks with impeccable on-highway manners



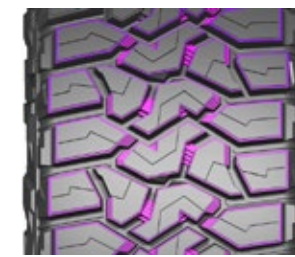
**Concave and convex sidewall design**

Concave and convex sidewall extend from the shoulder blocks down to the sidewall for extra off-road traction.



**Stable block design**

promotes even wear while providing a consistent contact patch and large outside tread elements for great dry handling



**Stepped block edges, stepped block ties**

Reduce irregular wear, fight stone retention and create additional biting surfaces for traction on wet surfaces, snow and Variable step shape block design for extra bite to get more traction.



**TAMAROCK R/T**



LONGER  
TREAD LIFE



STRONGER  
SIDEWALL



QUIETER  
RIDE



**DUAL SIDEWALL FINISH**

